

# BLE Locking Electronic Cylinder

The BLE Locking Electronic Cylinder is a battery-operated locking device. It has an electronic, free-rotating knob on one side and a mechanical firmly connected rotary knob on the other. The cylinder enables control of internal and external doors with digital keys. All your digital keys can be safely and conveniently used with the BLE Locking mobile app, and access rights can be shared with anyone. No internet connection is required to access your premises. The product is suitable for a very wide range of cylinder locks.

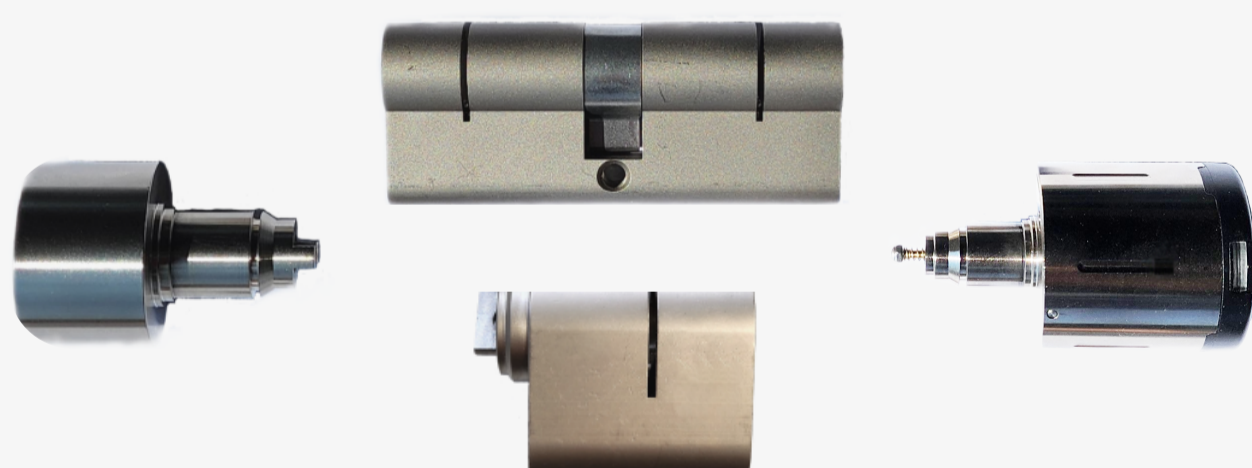


## Features

- **Modern.** The electronic cylinder with a modern stainless steel design replaces the mechanical lock cylinder. Doors are opened via the BLE Locking mobile app via Bluetooth®, which means no internet access is needed.
- **Fits almost all doors.** In addition to new objects, it is also possible to replace existing mechanical locking systems with a modern wireless access system. Thanks to the numerous variants available, the electronic cylinder offers the right solution for almost all doors. Be it a glass door, a wooden door, a plastic door, a tubular frame door, an evacuation door, a fire door or a smoke door.
- **Energy efficient**  
The electronic cylinder is characterized by a long battery life of up to 2 years per battery set.
- **Share keys in seconds.** Give access by sending a digital key via the BLE Locking mobile app. The owner of the handle can share digital keys to users that last either for a specified period of time or forever.
- **Highest safety.** The lock can only be opened from the outside via the BLE Locking mobile app. It is not possible to pick the lock or gain access even by breaking the outer knob.
- **Safe disassembly and battery replacement only with authorization.** By giving a command in the BLE Locking app, the electronic knob can be separated from the cylinder housing and therefore disassembled very easily. Changing the battery and thus removing the cover is only possible with the appropriate permission.

## Technical specification

Compatibility	Wide range of cylinder locks Suitable for all door thicknesses
Material	Stainless steel
Colour options	Chrome Black Anthracite Gold Bronze
Power supply	2 x CR2 Lithium 3V battery, possible external power source if the batteries run out
Battery lifetime	Up to 32,000 activations (approx. 2 years)
Communication protocols	BLE (Bluetooth Low Energy)
Operating temperature	-25°C to +65°C
IP rating	IP55 and IP66 available
Certification	DIN EN 15684



### Physical properties

#### Dimensions:

Electronic knob:  $\varnothing = 40\text{mm}$

Mechanical knob:  $\varnothing = 29\text{mm}$

Cylinder: All sizes available

BLE Locking and the logo are registered trademarks owned by BLE Locking OÜ. Other trademarks and trade names belong to their respective owners.

we put our  in locking

Customer support  
support@blelocking.com

Sales  
sales@blelocking.com

More information  
blelocking.com