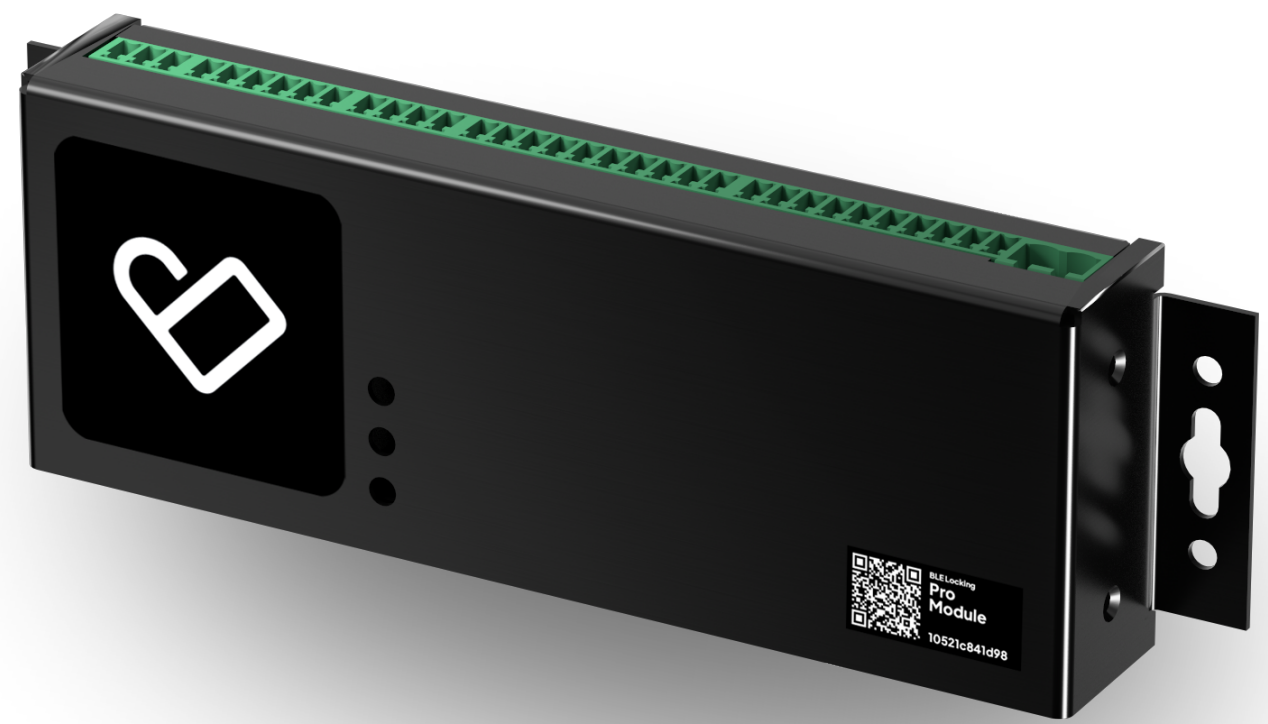


# BLE Locking PRO Module

## **All keys safely in one place – your mobile phone.**

The BLE Locking PRO module enables digital management for electric locks. All your digital keys can be used safely and conveniently with the BLE Locking mobile app and access rights can be shared with anyone you want. Digital keys can be used with and without internet access, depending on the type of the key.

**For professional use.** The PRO module is used mostly in commercial and industrial installation, e.g., self-service storages, office buildings, electric cabinets, and mobile towers, to name a few. The standard package includes access management via digital keys. In addition, you can



add up to two Wiegand based readers with PIN/RFID functions and there is a possibility to connect a door sensor and/or a motion sensor to trigger an alarm when there is any movement or an unauthorized entry at your site. Additional sensors can be applied via RS485.

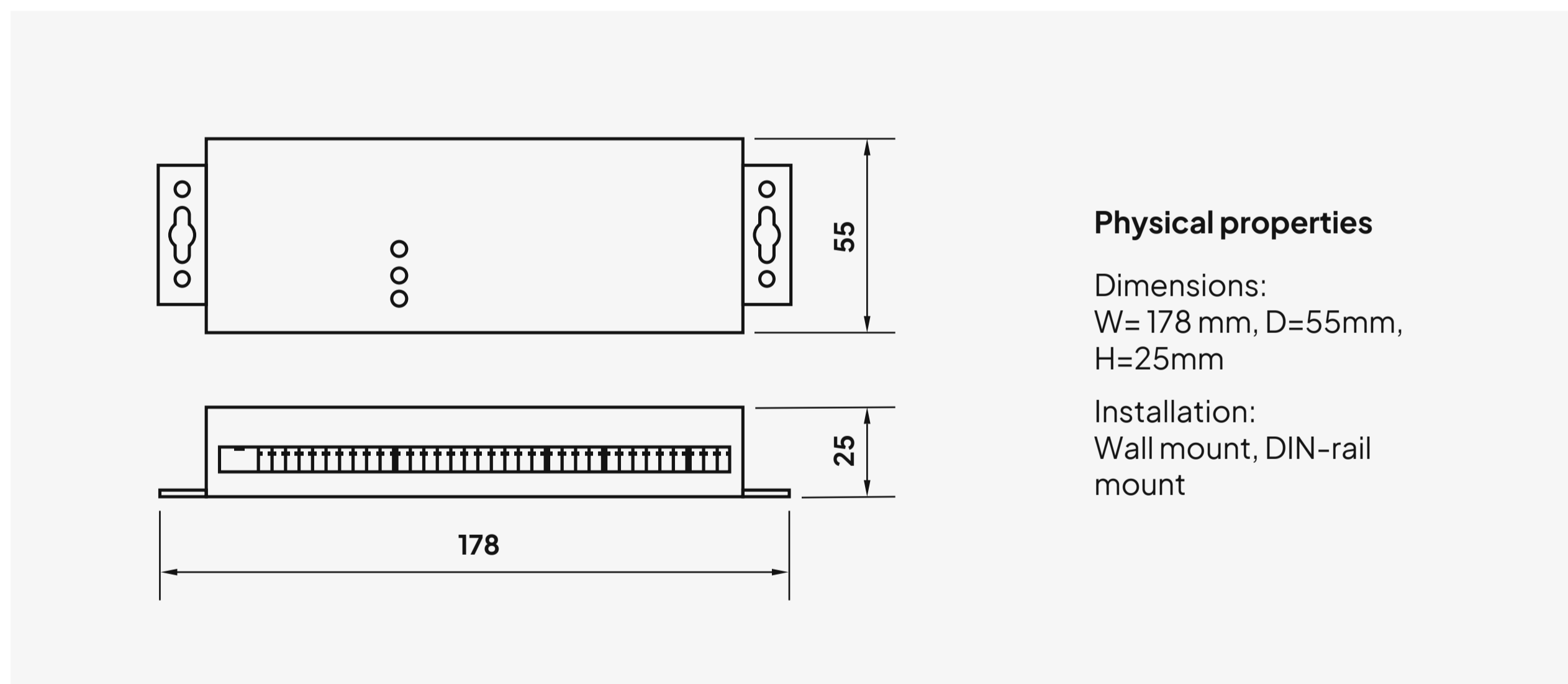
## Features

- **Physical keys made digital.** The door to your office, garage or storage room, along with a gate or any other accessway with an electric lock, can be made digital. Instead of a physical key, you will use a digital one, stored securely in your phone, in the BLE Locking app.
- **A manufacturer-independent solution.** The PRO module can be installed on any electric lock, garage door or gate system, regardless of manufacturer. You will also retain the ability to use physical keys or existing garage remote controls and access microchips. Installation of the module is easy. If necessary, contact a company specializing in door locks.
- **The digital key works without an Internet connection.** The PRO module works with BLE (Bluetooth Low Energy) standard and does not require an Internet connection to open the lock as long as the user is logged in to the BLE Locking app.
- **Remote opening option.** By connecting the PRO module to internet (WiFi or LAN), you get the opportunity to open your doors even when your lock is not nearby - you can open it while enjoying a trip abroad.
- **Give access by sending a web link to a mobile number.** The lock owner can share the digital key to a user as a web link, which makes is especially convenient for the user, because the mobile app does not need to be installed. Module needs to be connected to internet (WiFi or LAN) to use this feature.
- **Possible to connect different devices.** You can connect a Wiegand type card reader with a PIN pad to the BLE Locking Pro module.

**For other configurations, please contact [sales@blelocking.com](mailto:sales@blelocking.com)**

## Technical specification

<b>Power supply</b>	9–40V DC
<b>Relays (quantity and type)</b>	2× latching, 16A 250V AC
<b>Radio protocols &amp; network</b>	10BaseT/100BaseTX Ethernet, Auto Negotiation Wi-Fi 802.11 b/g/n Bluetooth v4.2 BR/EDR and BLE External 2.8dBi wifi/BT antenna
<b>Physical connectors</b>	6 pluggable terminals: power, RS485, relays, 1-wire, 2×Wiegand; 4×GPIO
<b>IP rating</b>	IP41
<b>Power consumption</b>	Normal operation 0.6W Maximum 2.4W
<b>Operating temperature</b>	-40°C to 75°C
<b>Weight</b>	320g



BLE Locking and the logo comprise a registered trademark owned by BLE Locking OÜ. Other trademarks and trade names are those of their respective owners.

we put our  in locking

Customer support  
[support@blelocking.com](mailto:support@blelocking.com)

Sales  
[sales@blelocking.com](mailto:sales@blelocking.com)

More information  
[blelocking.com](https://blelocking.com)